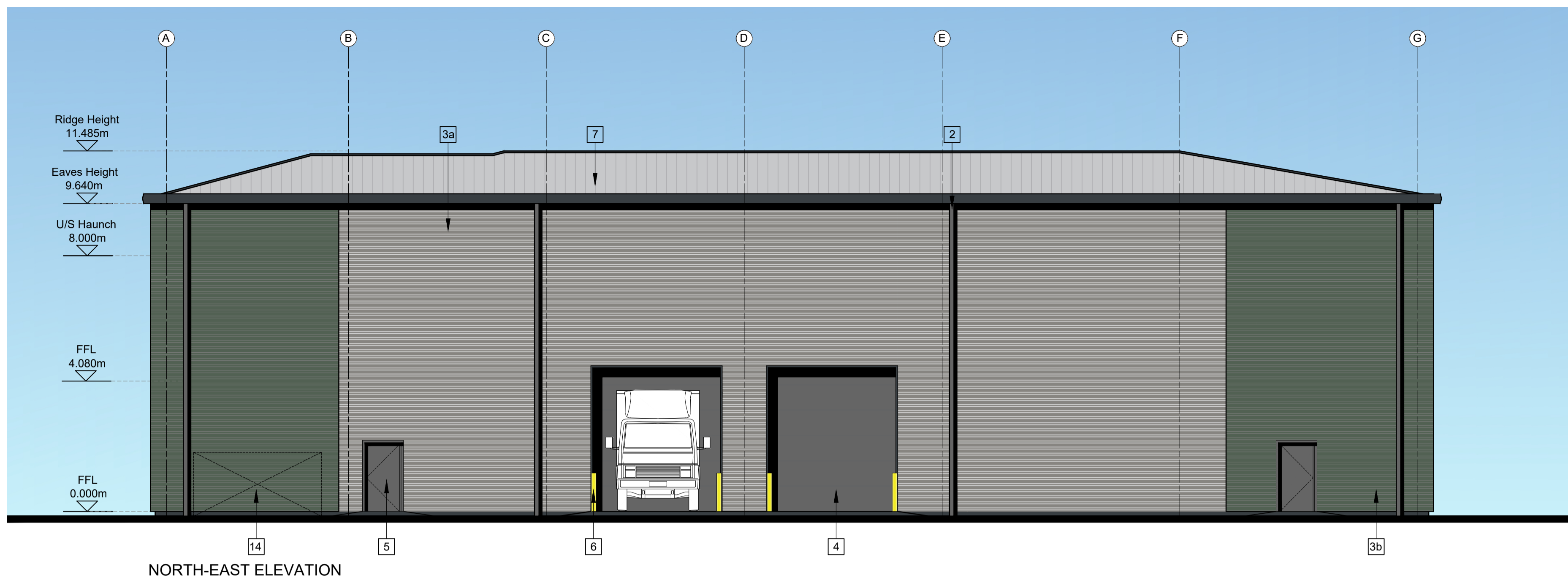


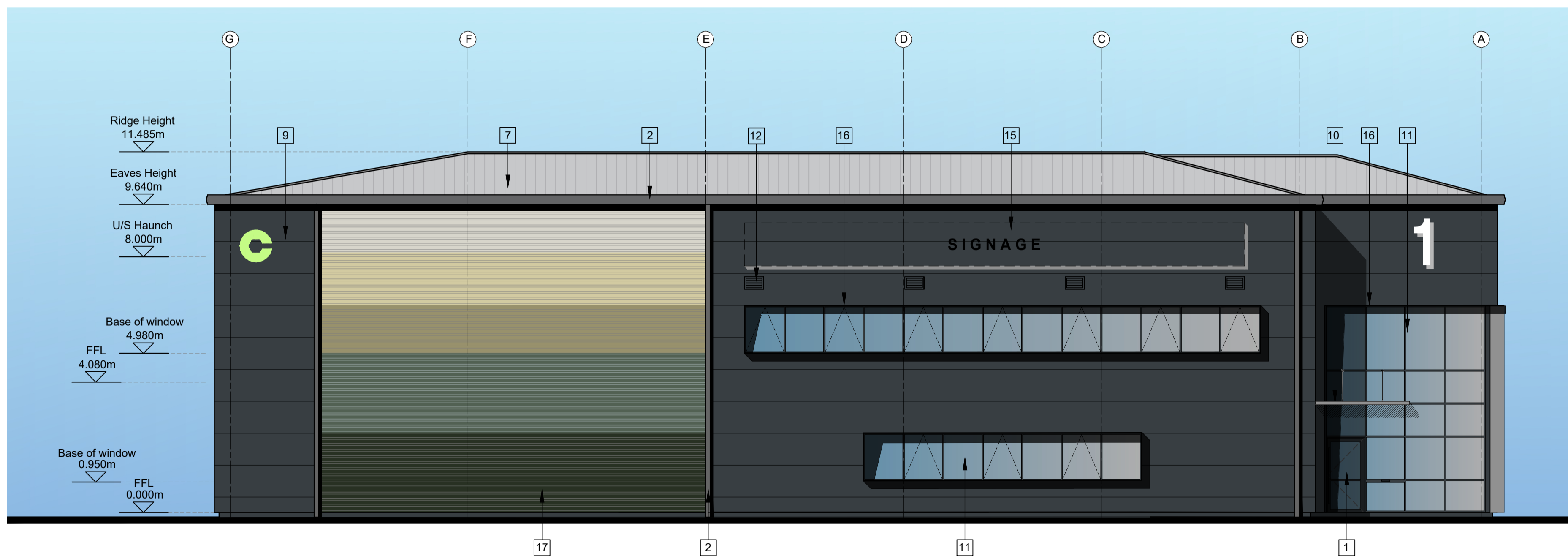
Figured dimensions only are to be used. All dimensions to be checked onsite. Differences between drawings and between drawings and specification or bills of quantities to be reported to the PRC Group.

© The copyright of the drawings and designs contained therein remains vested in the PRC Group.

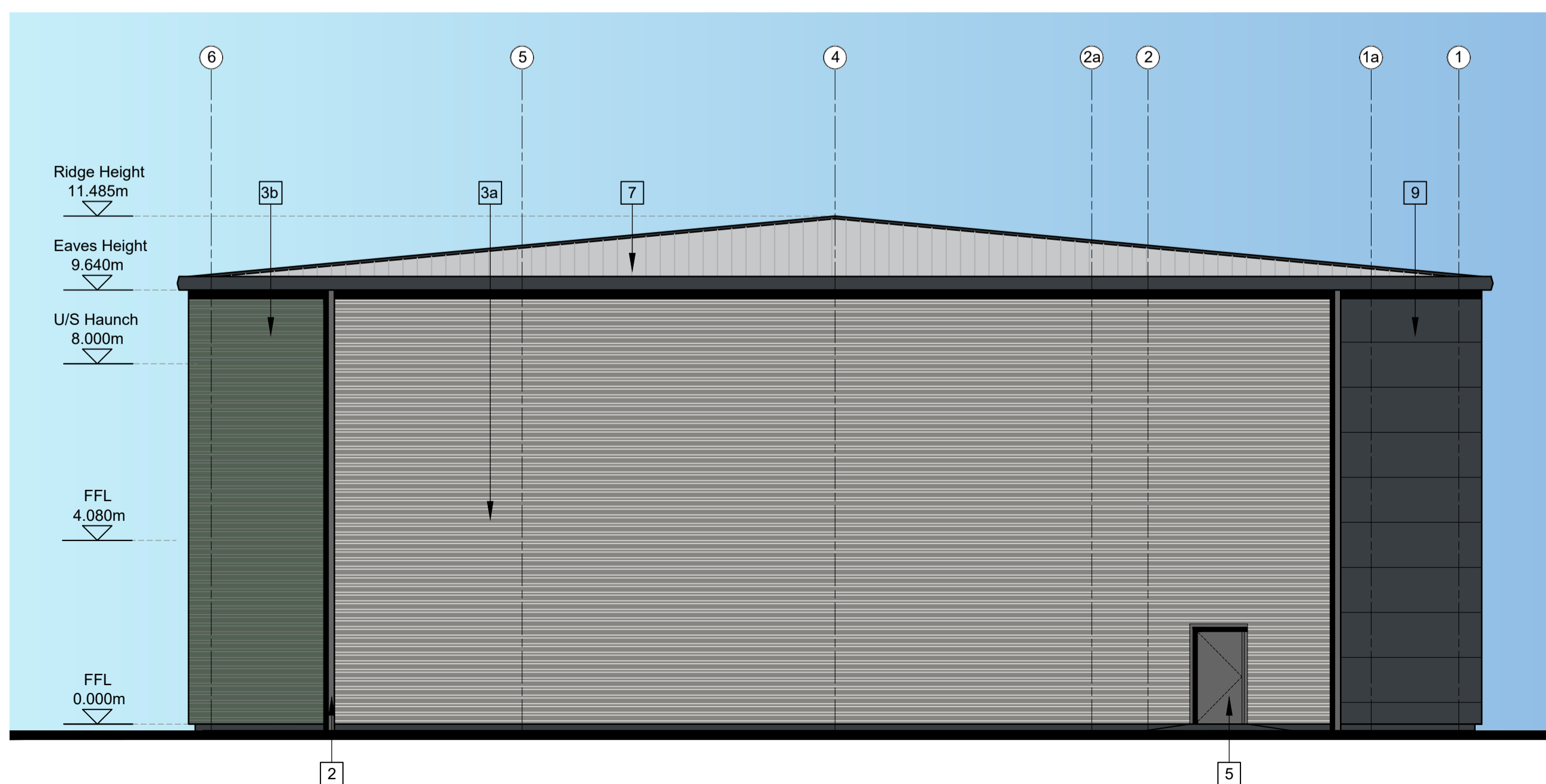
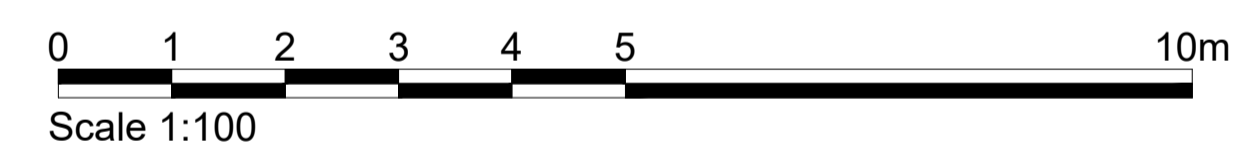
Revisions:	Drawn/Chkd:	Date:
A. Gradient Colour added	AM	MAY 25
B. Repositioned entrance door and extended curtain walling	AG	JUN 25
C. Client comments incorporated	SB	JUN 25
D. Roof line updated.	AMc	JUN 25
E. Ground floor windows amended.	AMc	JUN 25



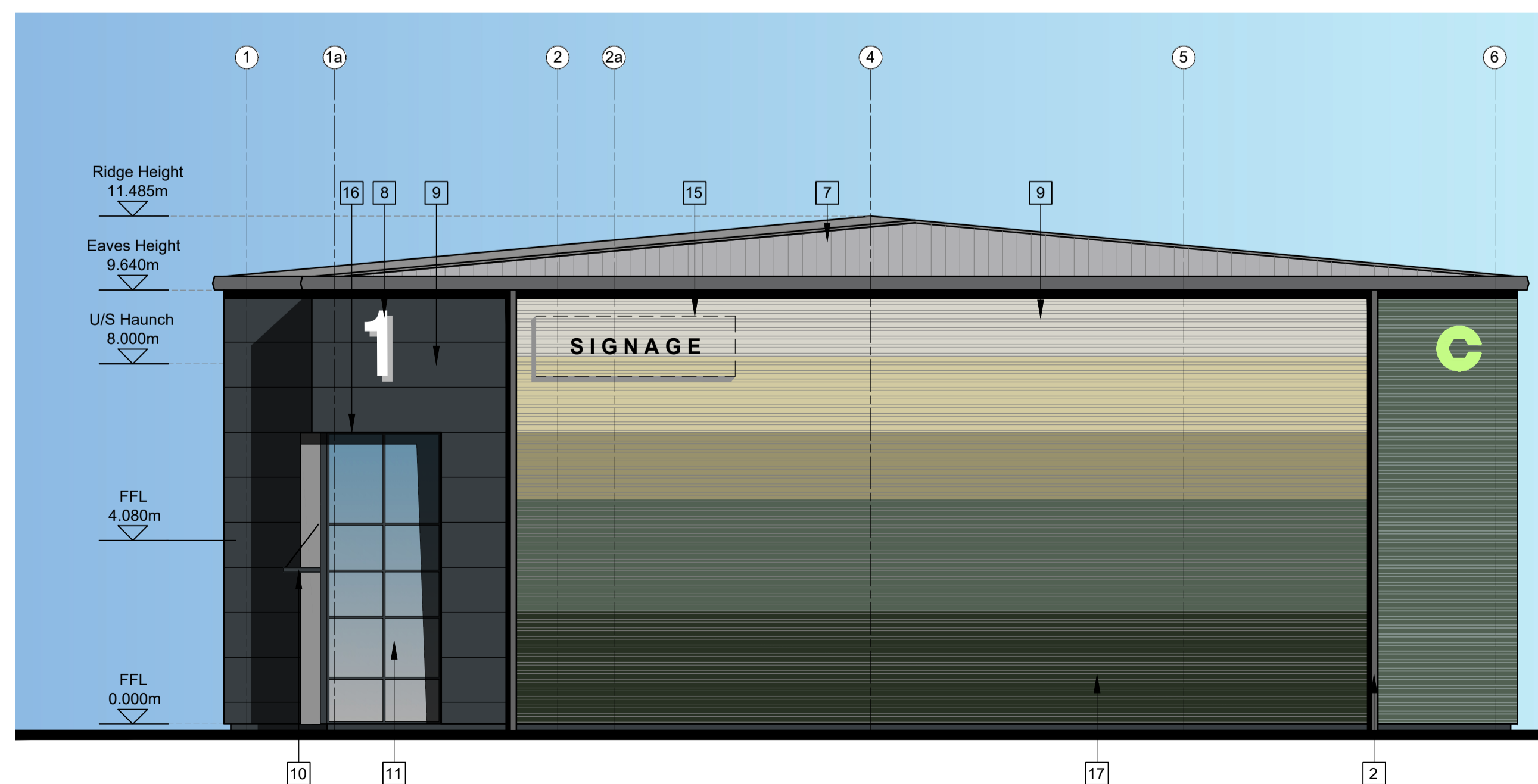
NORTH-EAST ELEVATION



SOUTH-WEST ELEVATION



NORTH-WEST ELEVATION



SOUTH-EAST ELEVATION

MATERIALS KEY:

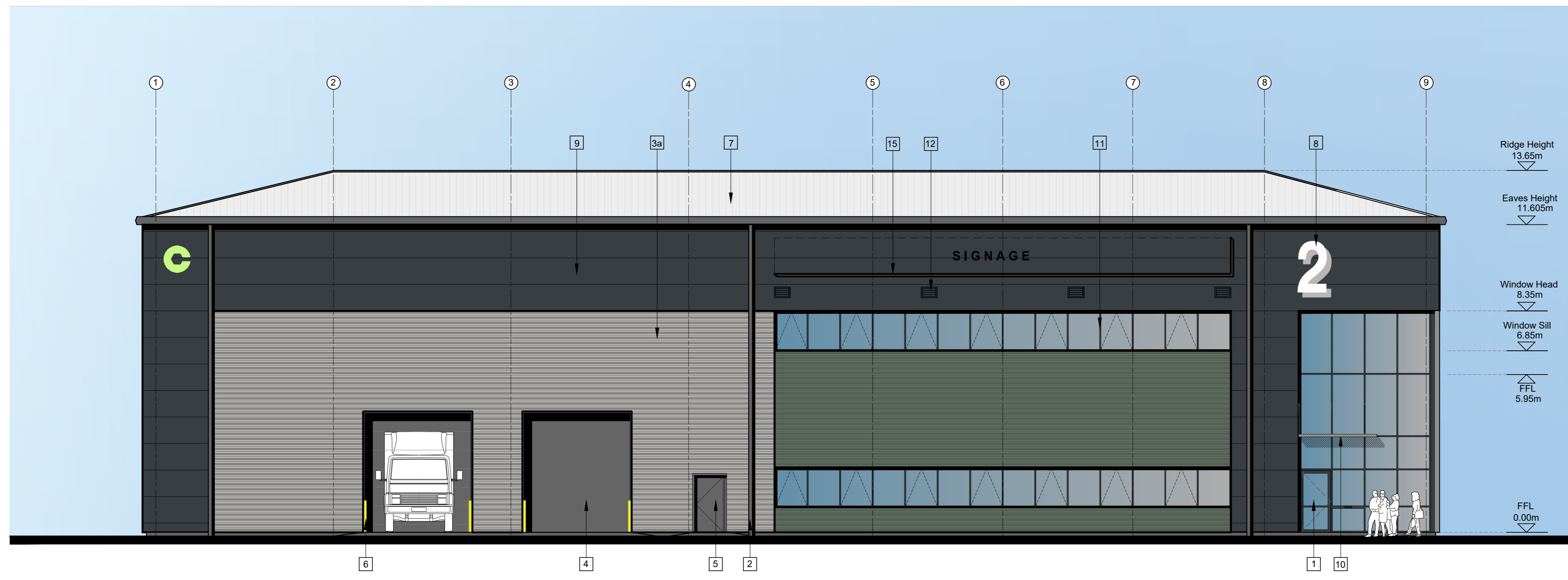
- 1 ALUMINIUM FRAMED ENTRANCE DOORS (RAL 7016 GRAPHITE GREY) WITH CANOPY
- 2 ALUMINIUM RAINWATER GOODS (RAL 7016 GRAPHITE GREY)
- 3a HORIZONTAL PROFILED CLADDING (RAL 9007 GREY ALUMINIUM METALLIC)
- 3b HORIZONTAL PROFILED CLADDING (RAL 150,40,10 GREEN GREY)
- 4 LOADING DOORS (RAL 7016 GRAPHITE GREY & RAL 9002 INTERNAL)
- 5 STEEL PERSONNEL DOORS (RAL 7016 GRAPHITE GREY)
- 6 STEEL BOLLARD
- 7 PROFILED ROOF CLADDING (GOOSEWING GREY)
- 8 METALLIC SILVER NUMERAL SIGN
- 9 MICRORIB COMPOSITE CLADDING (RAL 7016 GRAPHITE GREY)
- 10 CANOPY
- 11 ALUMINIUM FRAMED WINDOWS
- 12 OFFICE VENT LOUVRE
- 13 SVP LOUVRE
- 14 AC ENCLOSURE
- 15 FUTURE SIGNAGE
- 16 GREY BOX FLASHING (RAL 7016 GRAPHITE GREY)
- 17 HORIZONTAL PROFILED CLADDING COLOURS FROM TOP TO BOTTOM:
RAL 9002 HAMLET
RAL 100-80-20 MEADOWLAND
RAL 100-60-20 MOORLAND GREEN
RAL 150-40-10 GREEN GREY
RAL 140-20-10 JUNIPER GREEN



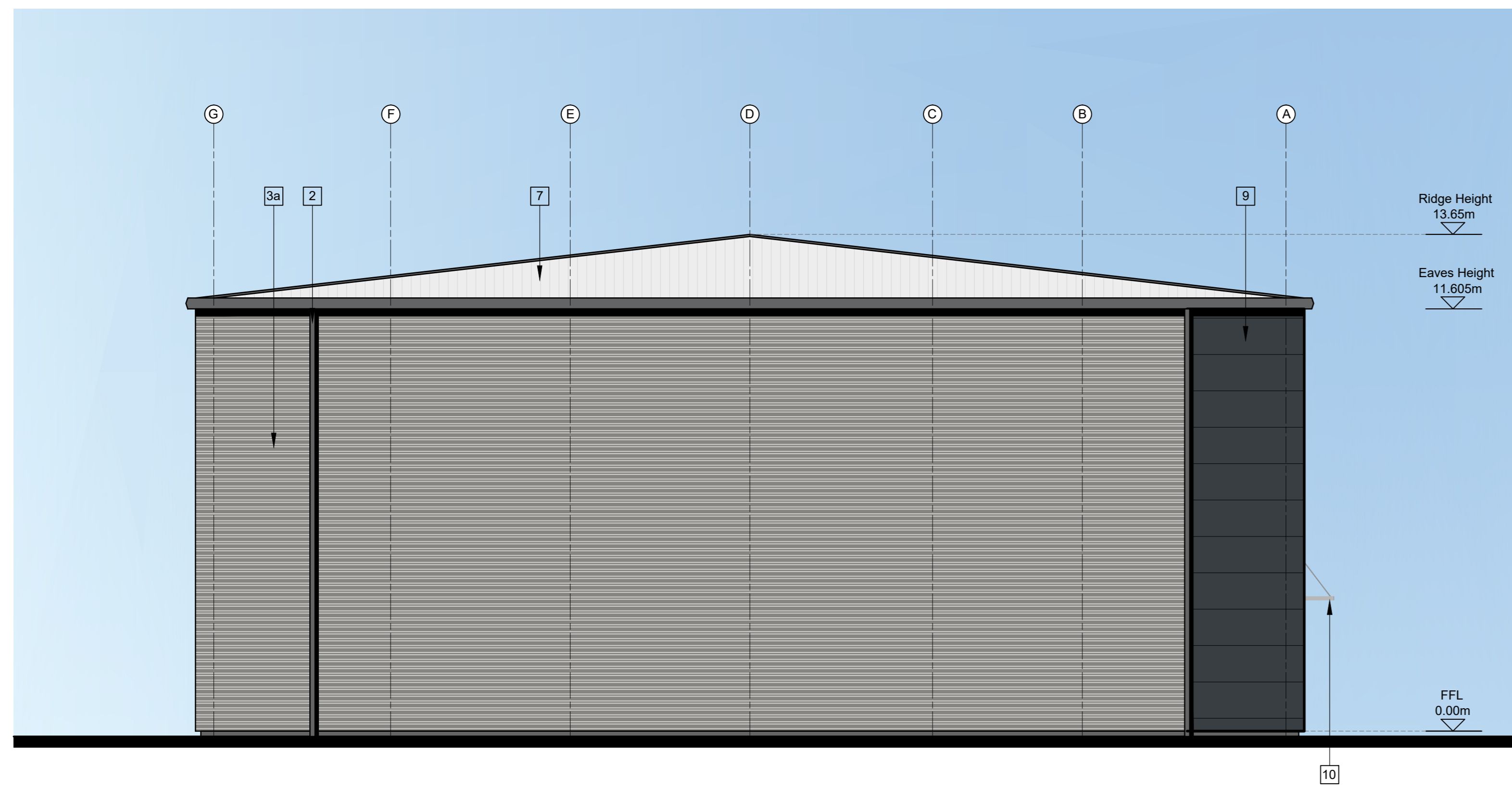
Client:	CHANCERYGATE
Project:	QUESTOR, HAWLEY ROAD, DARTFORD
Drawing Title:	UNITS 1 - PROPOSED ELEVATIONS
JOB No:	11198
Project Stage:	PL
Status:	PLANNING
First Issue Date:	MAR 25
Scale:	1:100
Lead/Checked:	GW

Project	Originator	Zone	Level	Type	Rate	Fig. No.	Rev.
-	-	-	-	-	-	220	- E

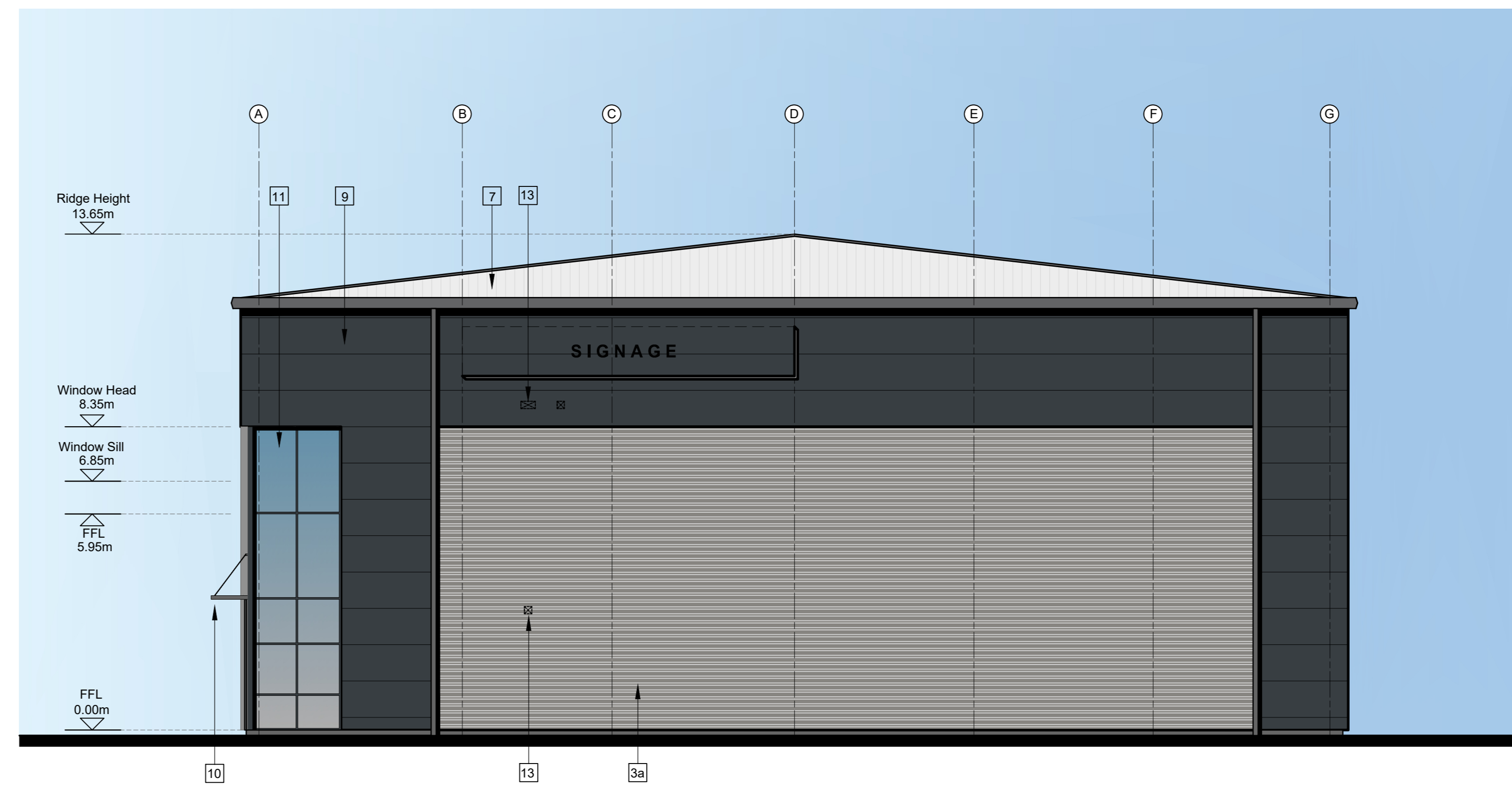
BM File Name:



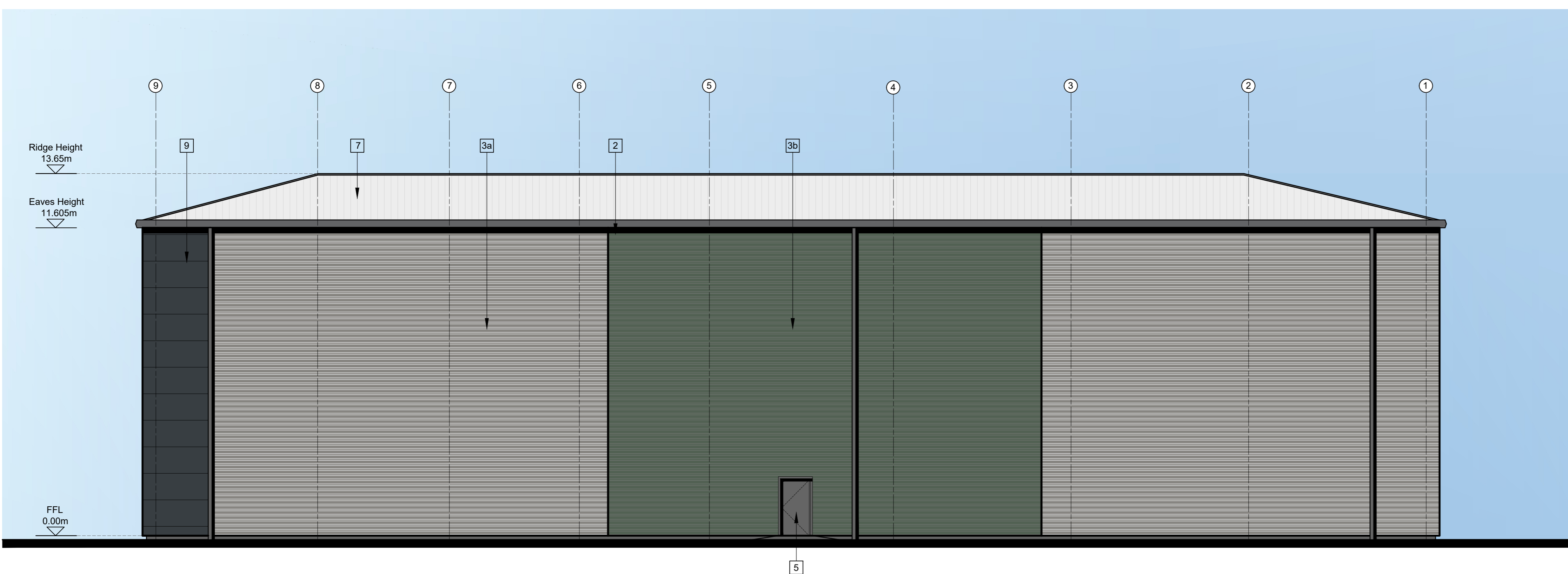
SOUTH-WEST ELEVATION



NORTH-WEST ELEVATION

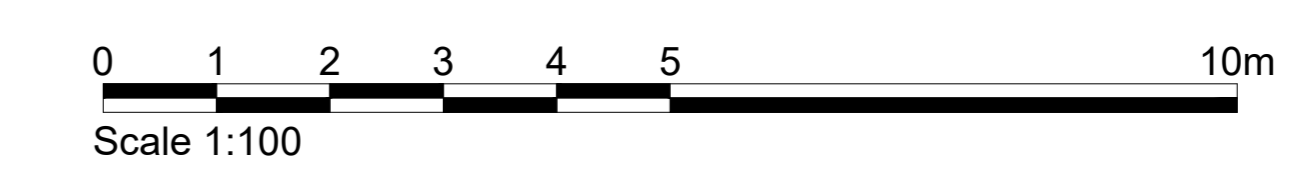


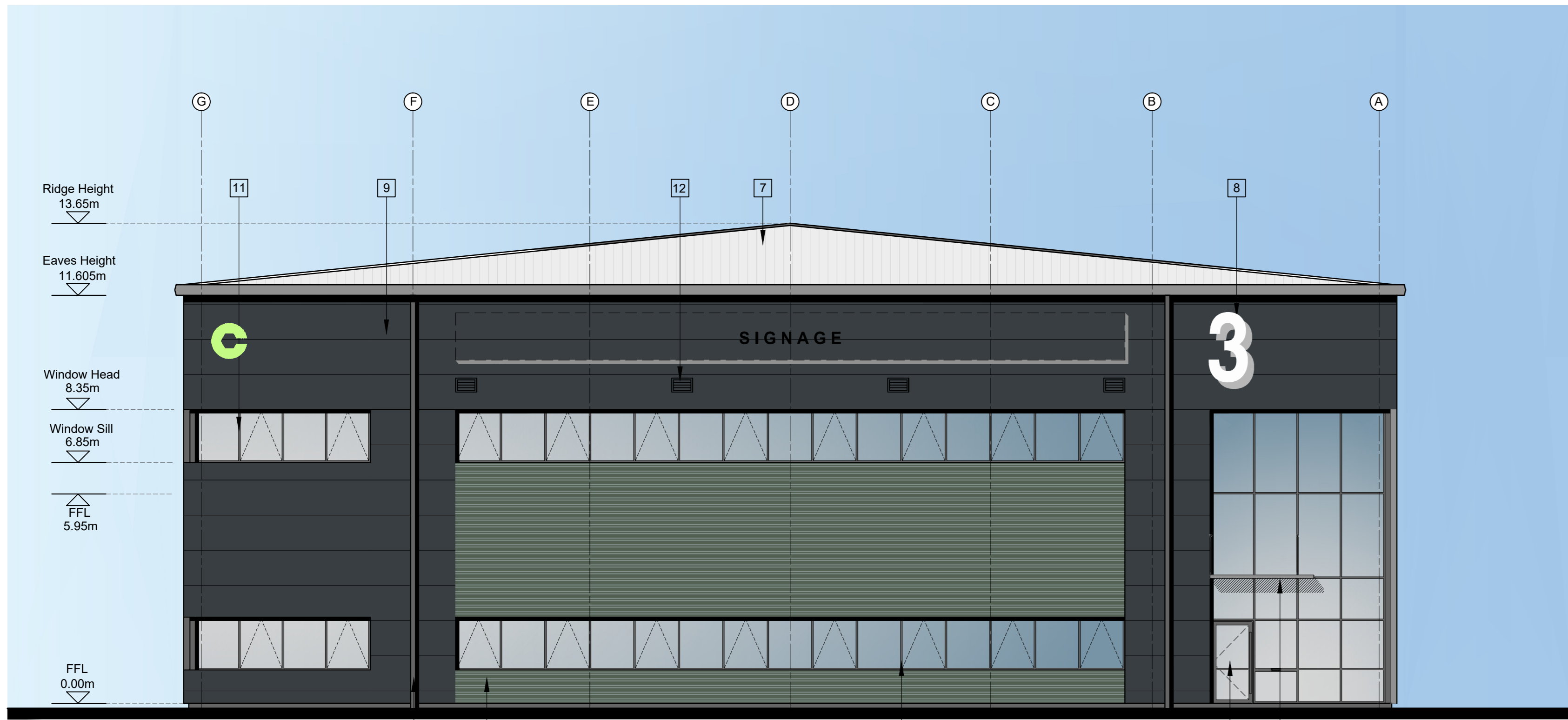
SOUTH-EAST ELEVATION



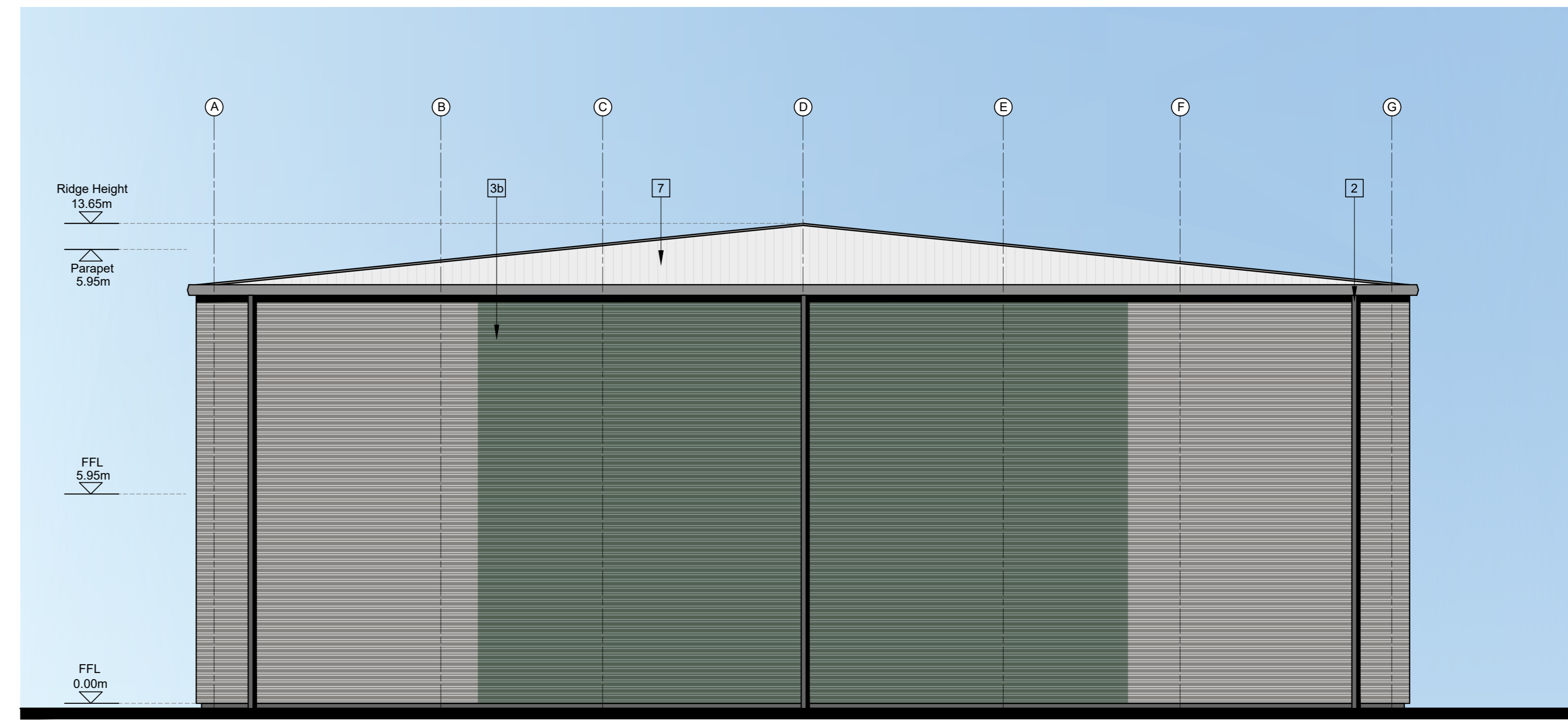
NORTH-EAST ELEVATION

- MATERIALS KEY:**
- 1 ALUMINUM FRAMED ENTRANCE DOORS (RAL 7016 GRAPHITE GREY) WITH CANOPY
 - 2 ALUMINUM RAINWATER GOODS (RAL 7016 GRAPHITE GREY)
 - 3 HORIZONTAL PROFILED CLADDING (RAL 9007 GREY ALUMINIUM METALLIC)
 - 3a HORIZONTAL PROFILED CLADDING (RAL 150.40.10 GREEN GREY)
 - 3b HORIZONTAL PROFILED CLADDING (RAL 150.40.10 GREEN GREY)
 - 4 LOADING DOORS (RAL 7016 GRAPHITE GREY & RAL 9002 INTERNAL)
 - 5 STEEL PERSONNEL DOORS (RAL 7016 GRAPHITE GREY)
 - 6 STEEL BOLLARD
 - 7 PROFILED ROOF CLADDING (GOOSEWING GREY)
 - 8 METALLIC SILVER NUMERAL SIGN
 - 9 MICROBIS COMPOSITE CLADDING (RAL 7016 GRAPHITE GREY)
 - 10 CANOPY
 - 11 ALUMINUM FRAMED WINDOWS
 - 12 OFFICE VENT LOUVRE
 - 13 SVP LOUVRE
 - 14 AC ENCLOSURE
 - 19 FUTURE SIGNAGE





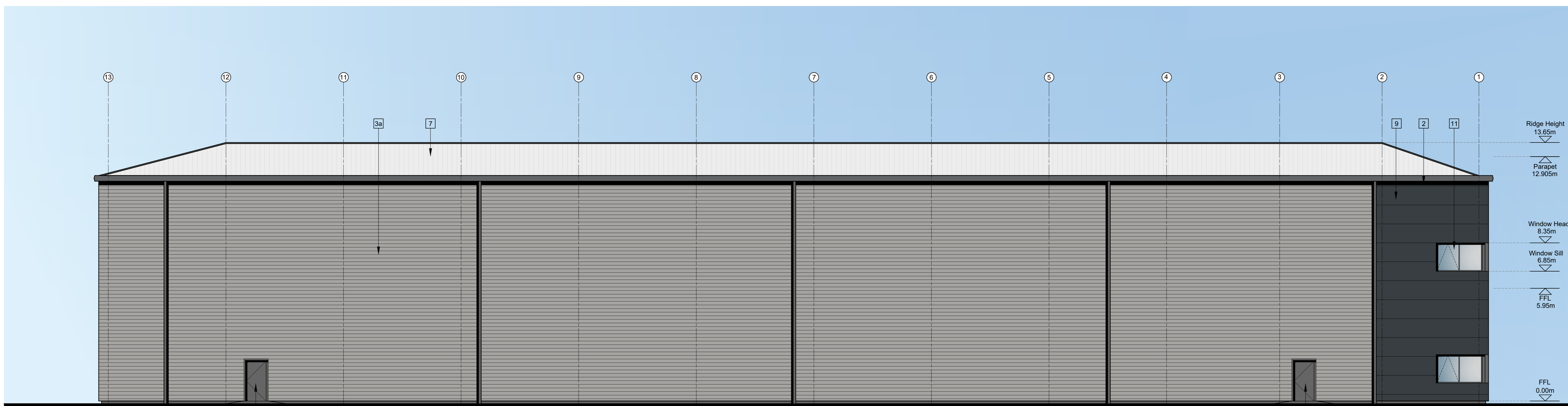
SOUTH ELEVATION



NORTH ELEVATION

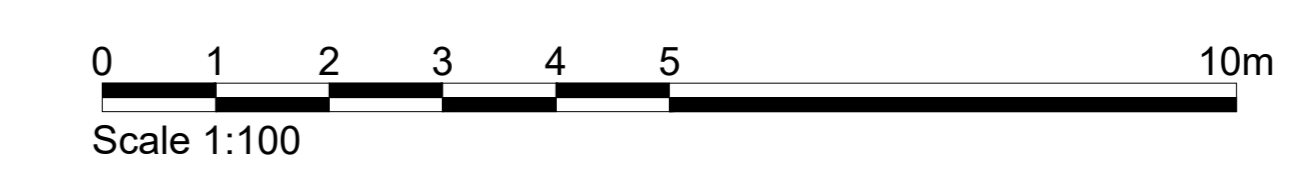


EAST ELEVATION



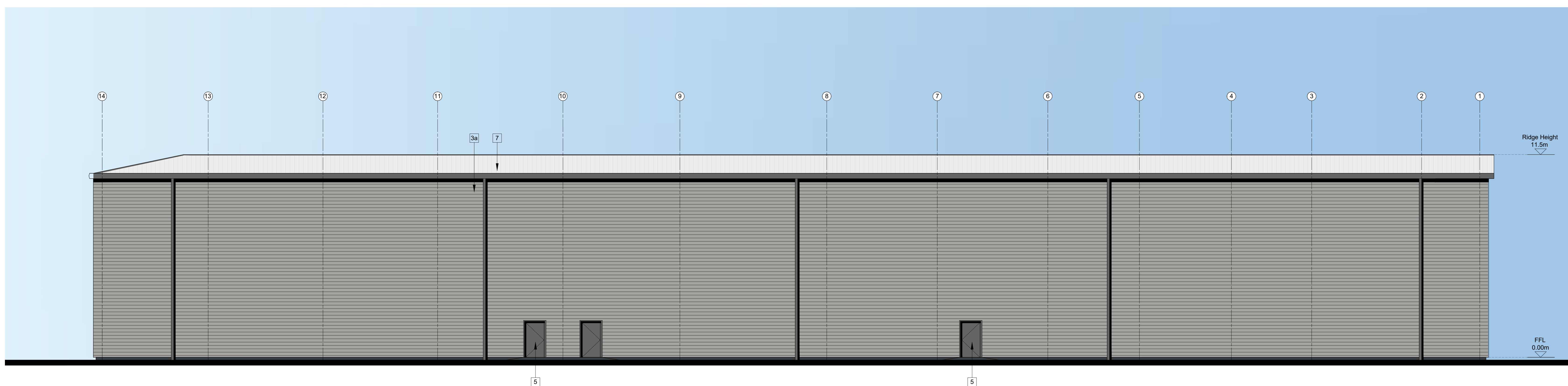
WEST ELEVATION

- MATERIALS KEY:**
- 1 ALUMINUM FRAMED ENTRANCE DOORS (RAL 7016 GRAPHITE GREY) WITH CANOPY
 - 2 ALUMINUM RAINWATER GOODS (RAL 7016 GRAPHITE GREY)
 - 3a HORIZONTAL PROFILED CLADDING (RAL 9007 GREY ALUMINIUM METALLIC)
 - 3b HORIZONTAL PROFILED CLADDING (RAL 150.40.10 GREEN GREY)
 - 4 LOADING DOORS (RAL 7016 GRAPHITE GREY & RAL 9002 INTERNAL)
 - 5 STEEL PERSONNEL DOORS (RAL 7016 GRAPHITE GREY)
 - 6 STEEL BOLLARD
 - 7 PROFILED ROOF CLADDING (GOOSEWING GREY)
 - 8 METALLIC SILVER NUMERAL SIGN
 - 9 MICROBIS COMPOSITE CLADDING (RAL 7016 GRAPHITE GREY)
 - 10 CANOPY
 - 11 ALUMINUM FRAMED WINDOWS
 - 12 OFFICE VENT LOUVRE
 - 13 SVP LOUVRE
 - 14 AC ENCLOSURE
 - 15 FUTURE SIGNAGE



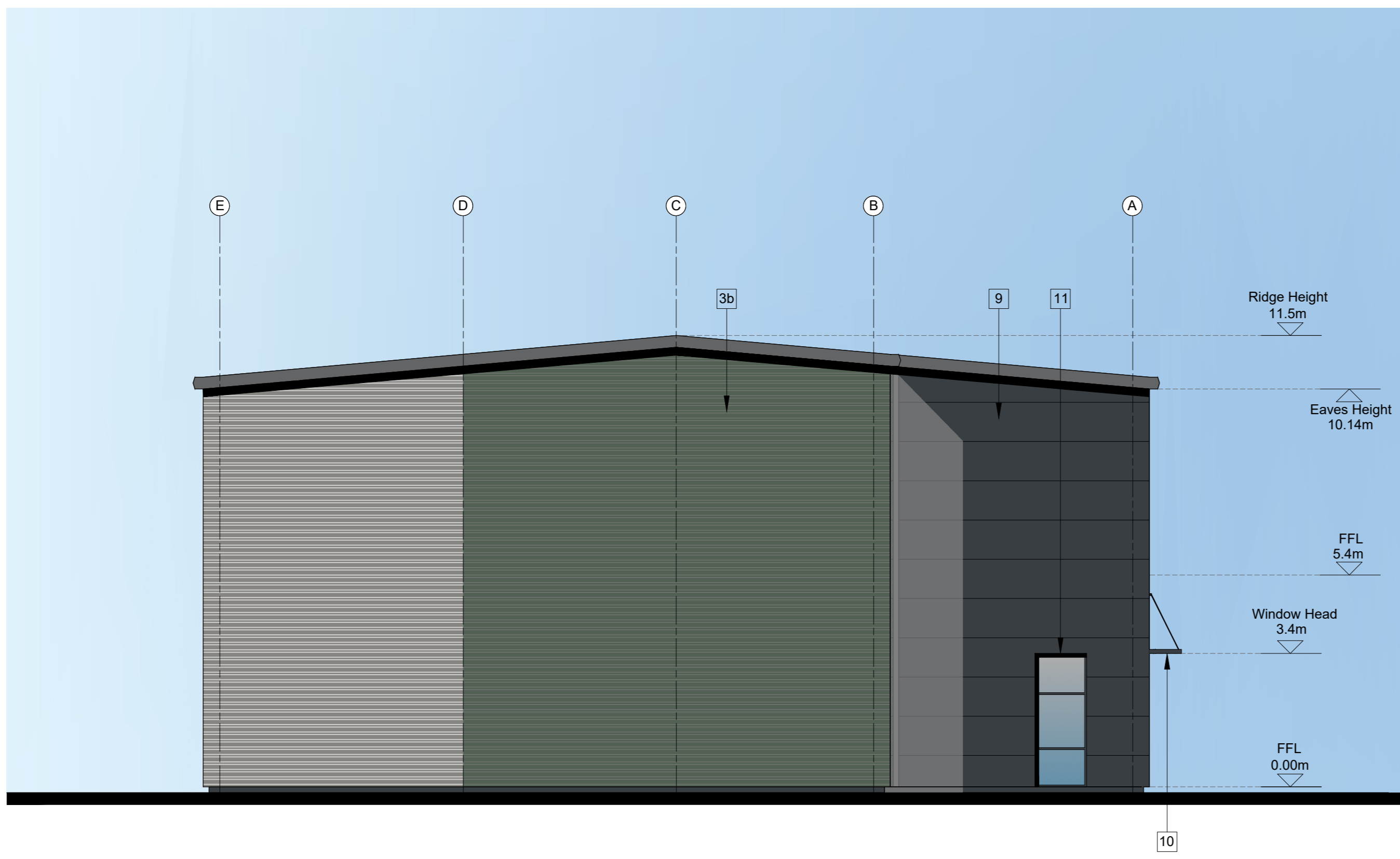


NORTH-WEST ELEVATION

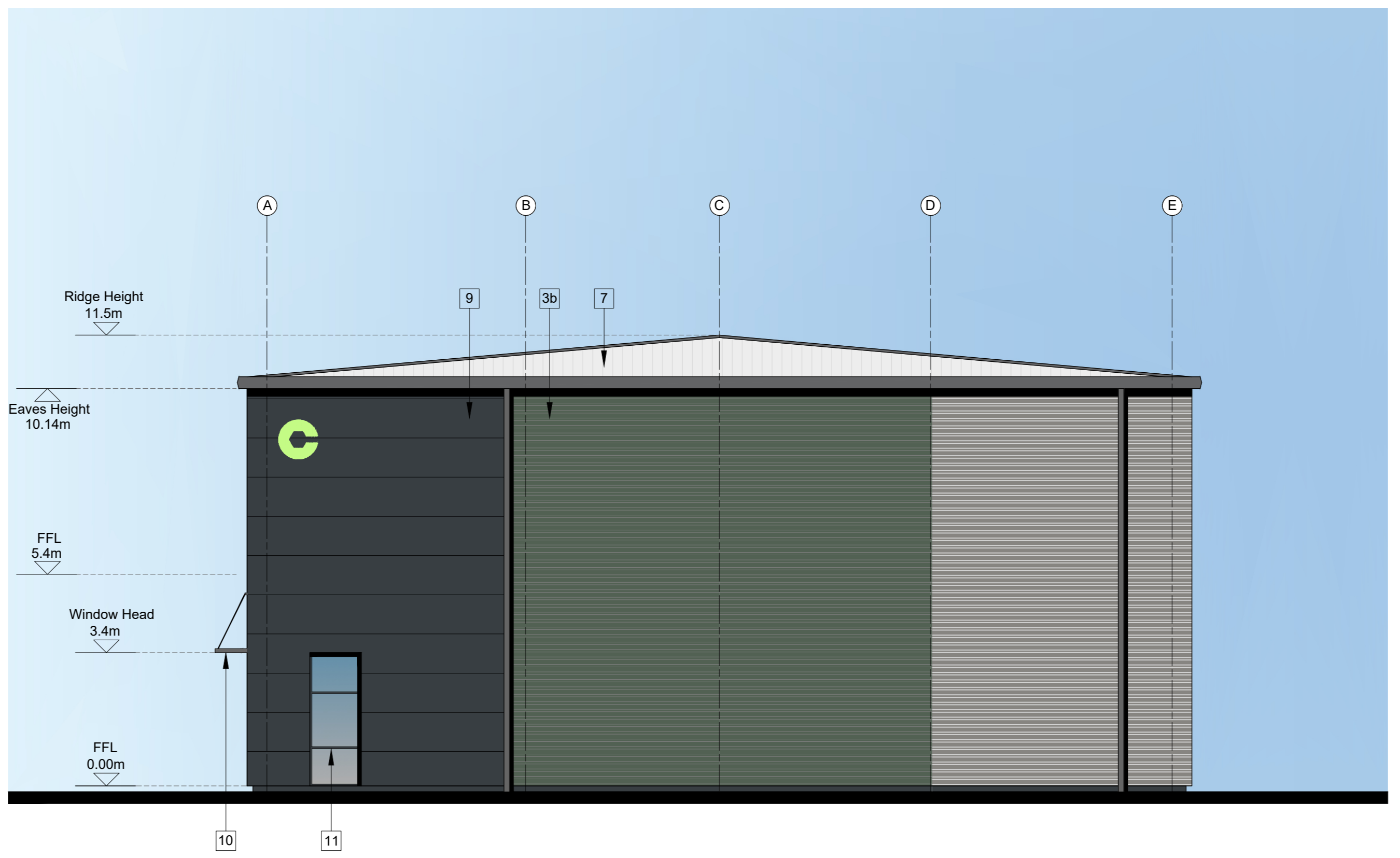


SOUTH-EAST ELEVATION

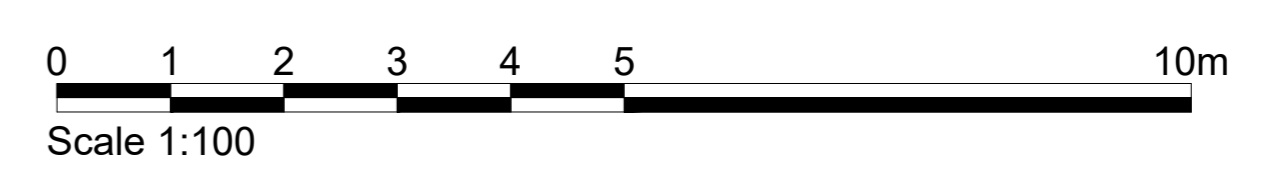
- MATERIALS KEY:**
- 1 ALUMINUM FRAMED ENTRANCE DOORS (RAL 7016 GRAPHITE GREY) WITH CANOPY
 - 2 ALUMINUM RAINWATER GOODS (RAL 7016 GRAPHITE GREY)
 - 3a HORIZONTAL PROFILED CLADDING (RAL 9007 GREY ALUMINIUM METALLIC)
 - 3b HORIZONTAL PROFILED CLADDING (RAL 150.40.10 GREEN GREY)
 - 4 LOADING DOORS (RAL 7016 GRAPHITE GREY & RAL 9002 INTERNAL)
 - 5 STEEL PERSONNEL DOORS (RAL 7016 GRAPHITE GREY)
 - 6 STEEL BOLLARD
 - 7 PROFILED ROOF CLADDING (GOOSEWING GREY)
 - 8 METALLIC SILVER NUMERAL SIGN
 - 9 MICRORIB COMPOSITE CLADDING (RAL 7016 GRAPHITE GREY)
 - 10 CANOPY
 - 11 ALUMINUM FRAMED WINDOWS
 - 12 OFFICE VENT LOUVRE
 - 13 SVP LOUVRE
 - 14 AC ENCLOSURE
 - 15 FUTURE SIGNAGE
 - 16 GREY BOX FLASHING (RAL 7016 GRAPHITE GREY)

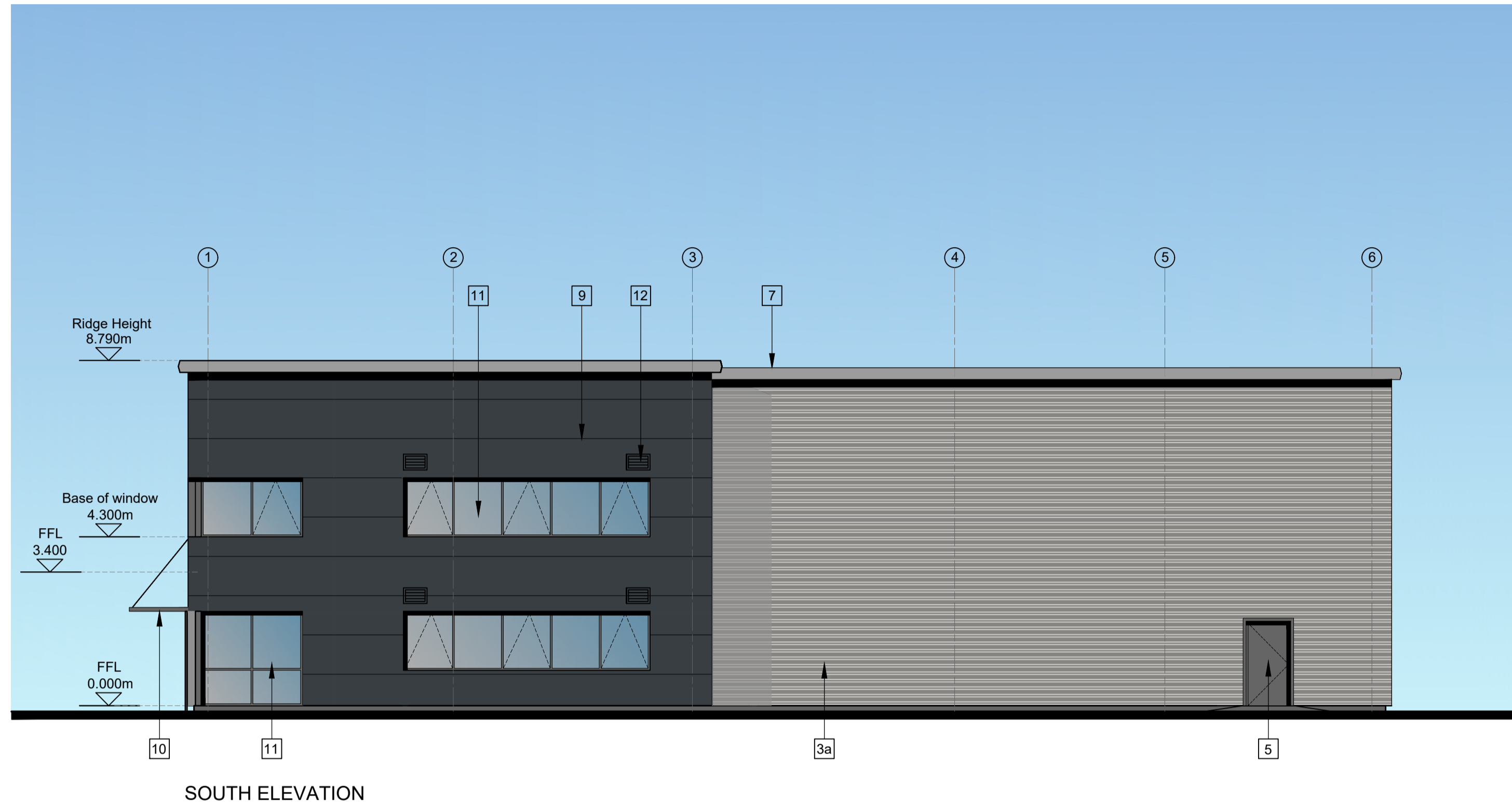


NORTH-EAST ELEVATION

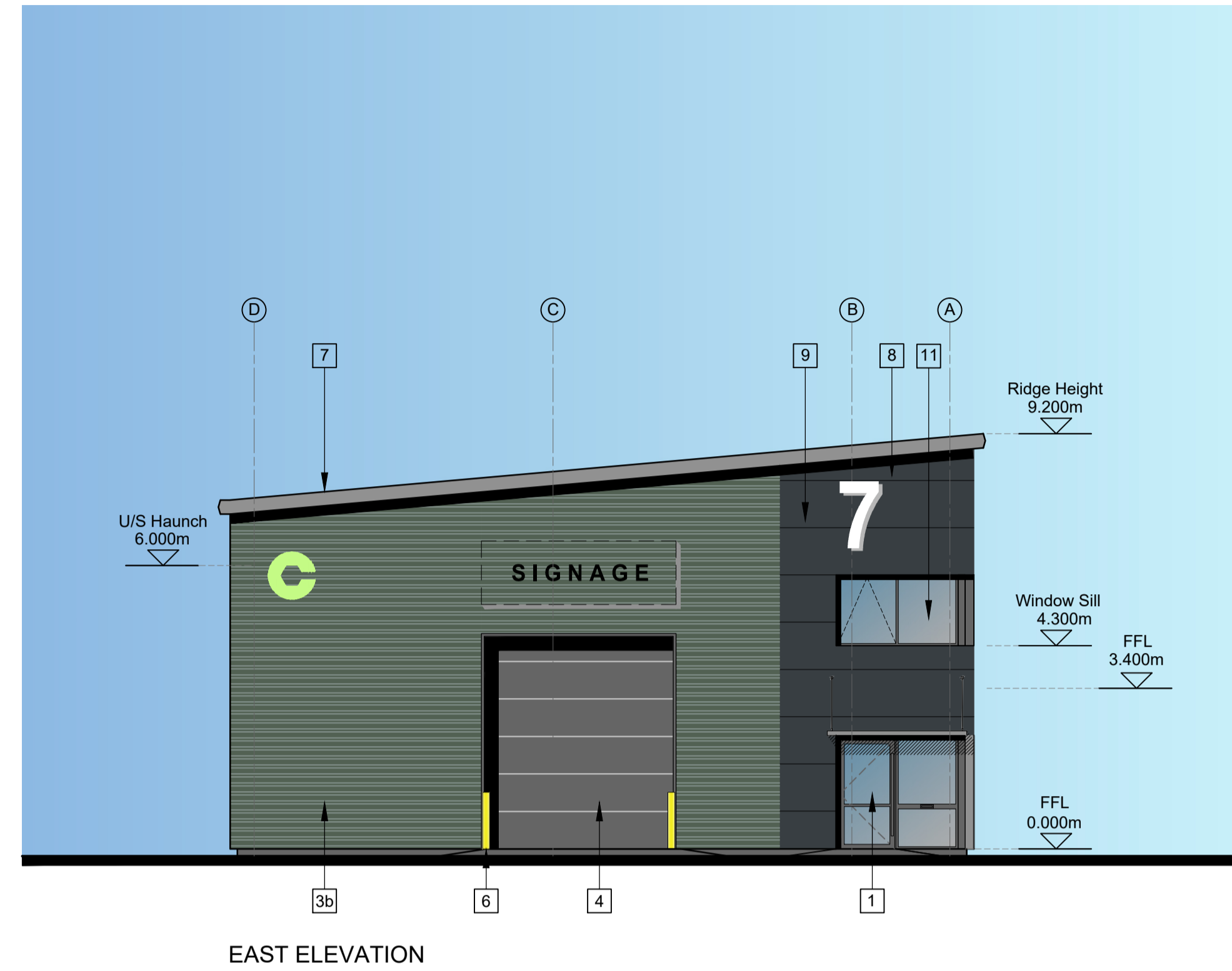


SOUTH-WEST ELEVATION

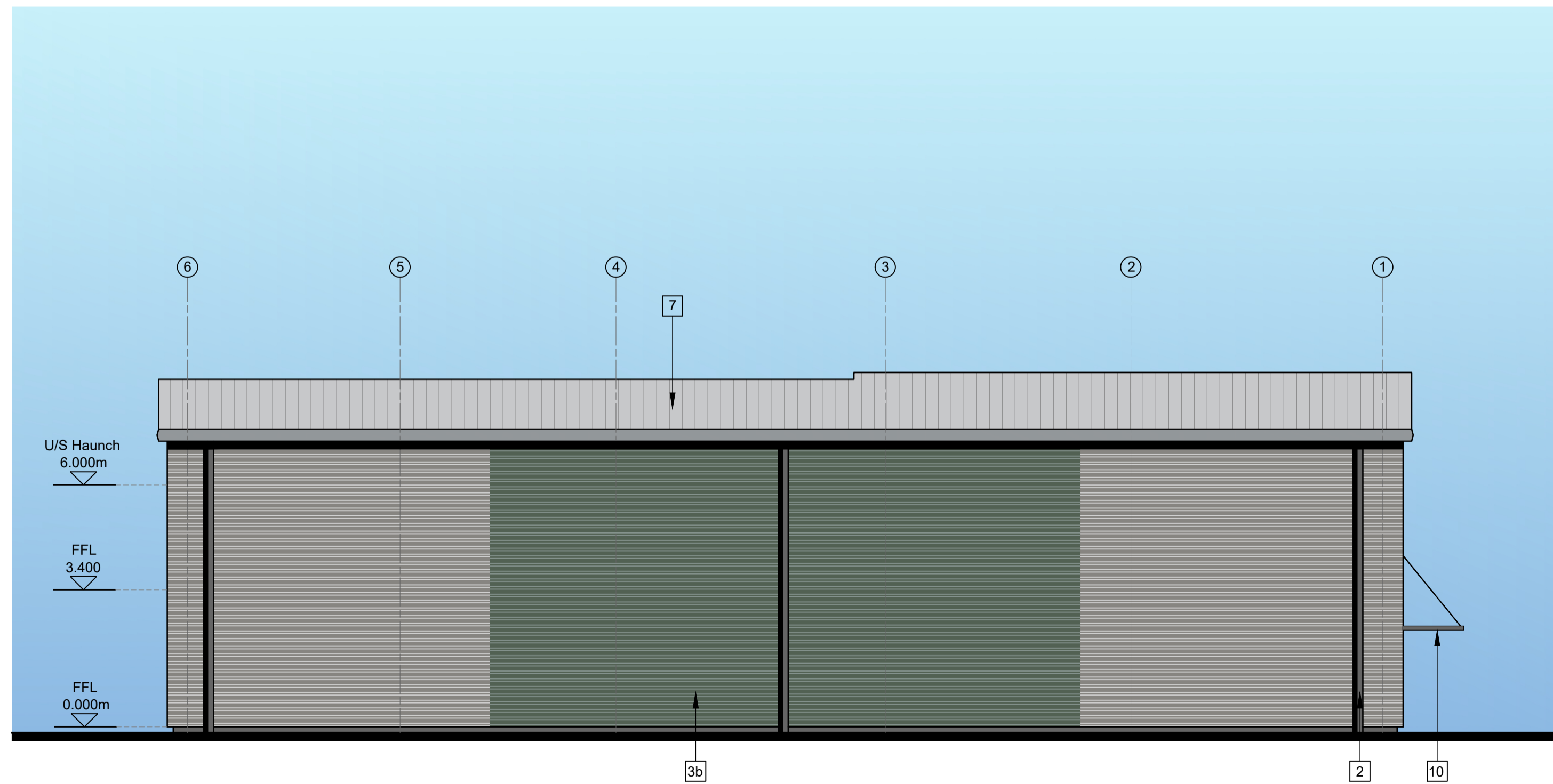




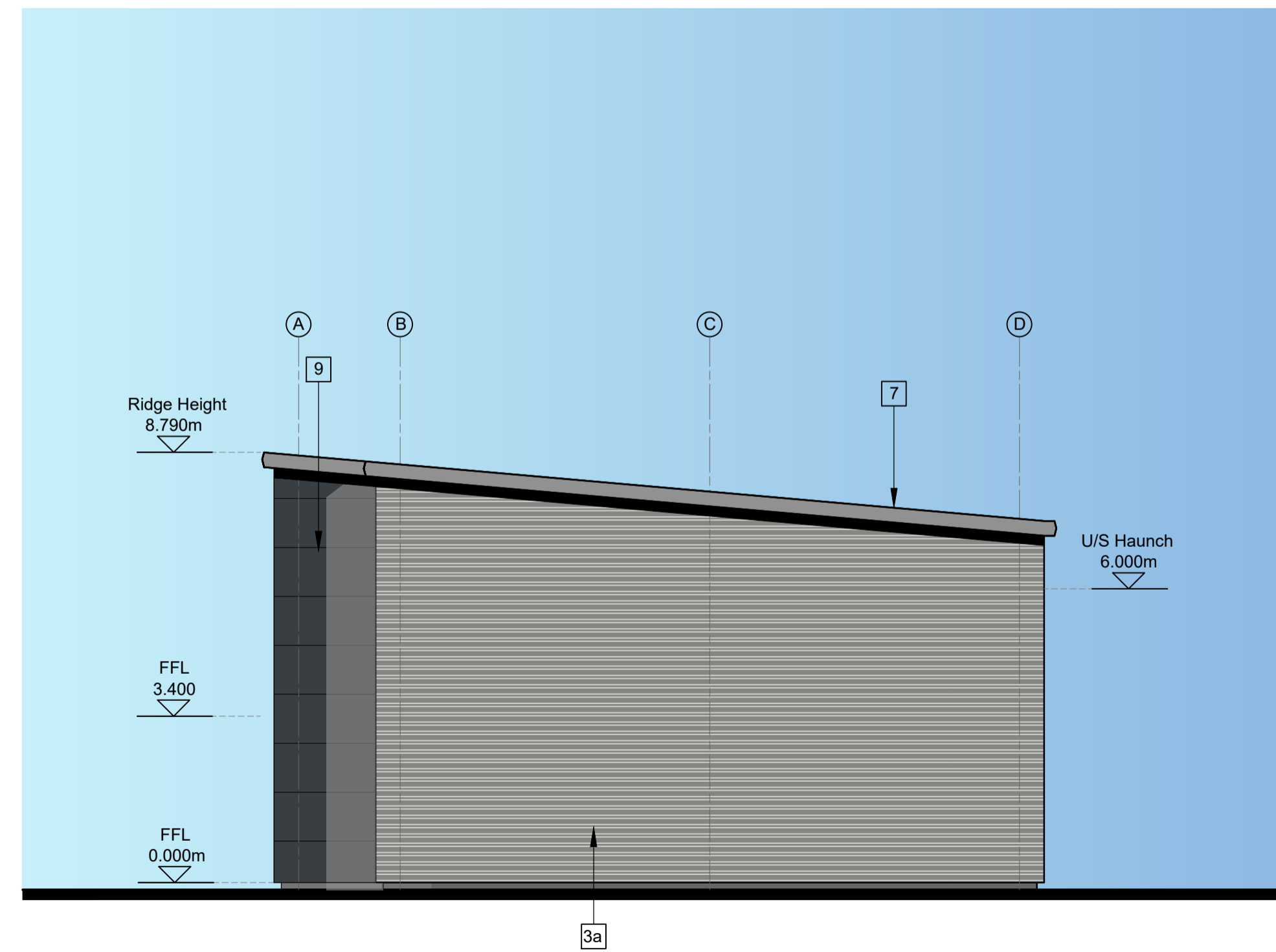
SOUTH ELEVATION



EAST ELEVATION



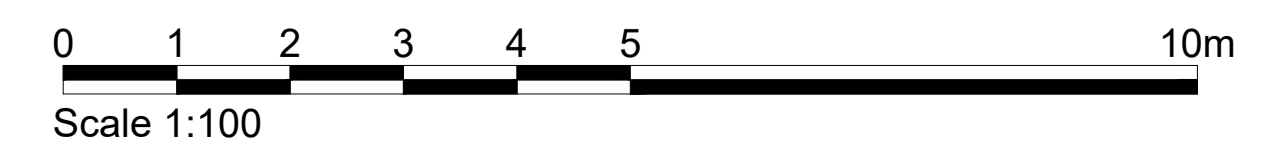
NORTH ELEVATION



WEST ELEVATION

MATERIALS KEY:

- 1 ALUMINUM FRAMED ENTRANCE DOORS (RAL 7016 GRAPHITE GREY) WITH CANOPY
- 2 ALUMINIUM RAINWATER GOODS (RAL 7016 GRAPHITE GREY)
- 3a HORIZONTAL PROFILED CLADDING (RAL 9007 GREY ALUMINIUM METALLIC)
- 3b HORIZONTAL PROFILED CLADDING (RAL 150,40,10 GREEN GREY)
- 4 LOADING DOORS (RAL 7016 GRAPHITE GREY & RAL 9002 INTERNAL)
- 5 STEEL PERSONNEL DOORS (RAL 7016 GRAPHITE GREY)
- 6 STEEL BOLLARD
- 7 PROFILED ROOF CLADDING (GOOSEWING GREY)
- 8 METALLIC SILVER NUMERAL SIGN
- 9 MICORIB COMPOSITE CLADDING (RAL 7016 GRAPHITE GREY)
- 10 CANOPY
- 11 ALUMINIUM FRAMED WINDOWS
- 12 OFFICE VENT LOUVRE
- 13 SVP LOUVRE
- 14 AC ENCLOSURE
- 15 FUTURE SIGNAGE
- 16 GREY BOX FLASHING (RAL 7016 GRAPHITE GREY)



Client: CHANCERYGATE

Project: QUESTOR
 HAWLEY ROAD, DARTFORD

Drawing Title: UNIT 7 - PROPOSED ELEVATIONS

JOB No	Project Stage	PL	PLANNING
11198	PL	PL	PLANNING
First Issue Date	Scale	1:100	Lead/Checked
JUN 25	GW		GW

Project	Originator	Zone	Level	Type	Rev	Rev
					226	- B

BM File Name: